

**RUSH
WITT &
WILSON**



**9 Pages Avenue, Bexhill-On-Sea, East Sussex TN39 3AP
£950,000**

Rush Witt & Wilson are delighted to welcome to the market this well presented and substantial five/seven bedroom detached house ideally situated in this sought after location of South Cliff. Offering bright and spacious accommodation throughout the property comprises large kitchen/diner, spacious lounge, separate dining room, utility space and separate W.C. to the ground floor. Whilst to the first floor there are five double bedrooms with the master comprising its own master suite with en-suite shower room, two single bedrooms/offices, modern fitted bathroom. Other internal benefits include double glazed windows throughout. Externally the property offers a stunning and level rear garden approx 200ft, front garden and driveway providing off road parking for multiple vehicles leading to integral garage. Viewings comes highly recommended to appreciate this large family home in this highly desired location within a very short walk to the seafront.



Entrance Hallway

With entrance door, one modern thermostatic electric radiator, stairs leading to first floor, door to under stairs storage space with further door leading to cloakroom, parquet flooring.

Cloakroom

Obscured window to side elevation, W.C. with low level flush, vanity unit with wash hand basin and mixer tap, storage cupboards beneath, part tiled walls, recess ceiling spot lights.

Living Room

17'10" x 15'10" (5.46 x 4.84)

Windows to front and rear elevations, set of double doors giving access to rear garden, exposed brickwork, feature brick fireplace with log burner.

Dining Room

14'4" x 11'10" (4.37 x 3.63)

Feature bay window to front elevation, feature fireplace with space for log burner, fitted storage cupboards.

Utility Area

11'7" x 7'4" (3.54 x 2.25)

Fitted base units with solid wood work tops, inset butler sink with mixer tap, fitted storage cupboard, log burner, additional storage cupboard with fitted shelving.

Kitchen/Breakfast Room

22'8" x 17'7" (6.93 x 5.36)

Windows to rear elevation, obscured glass panelled door leading to garden, one modern thermostatic electric radiator, fitted farmhouse style kitchen with a range of matching base level units with solid wood work top surfaces, inset butler sink with mixer tap, additional fitted storage unit, space for freestanding fridge/freezer, space for range master style cooker with fitted extractor hood above, plumbing space for dishwasher, wall mounted down lighters.

First Floor Landing

One modern thermostatic electric radiator, access to loft space, airing cupboard housing hot water cylinder with slatted shelving.

Master Suite

Bedroom One

17'5" x 13'8" (5.32 x 4.19)

Windows to rear elevation, range of fitted bedroom wardrobes with sliding doors, hanging space and shelving, modern thermostatic electric radiator, recess ceiling spot lights.

Shower Room

Obscured window to side elevation, modern fitted suite comprising W.C. with low level flush, vanity unit with inset wash hand basin and mixer tap, storage cupboards beneath, walk-in shower cubicle with wall mounted shower controls and shower attachment, wall mounted modern thermostatic controlled heated towel rail, tiled walls, recess ceiling spot lights.

Bedroom Two

14'9" x 11'7" (4.5 x 3.55)

Windows to front and side elevations with sea views, fitted wash hand basin with separate hot and cold taps with storage cupboards beneath and tiled splash back, fitted wardrobe with a range of hanging space and shelving.

Bedroom Three

10'7" x 8'2" (3.23 x 2.50)

Windows to rear and side elevation, fitted wardrobe with shelving.

Bedroom Four

9'6" x 8'1" (2.90 x 2.48)

Windows to front and side elevation with sea views, fitted wardrobe with hanging space and shelving.

Bedroom Five

10'8" x 7'11" (3.26 x 2.42)

Window to front elevation, fitted wardrobe with hanging space and shelving, vanity unit with wash hand basin with separate hot and cold taps and storage cupboard beneath, fitted storage cupboard above.

Bedroom Six/Office

12'0" x 5'9" (3.68 x 1.77)

Window to rear elevation, large fitted storage cupboard with shelving, electric heater.

Bedroom Seven

8'5" x 8'1" (2.58 x 2.48)

Window to front elevation with sea views, fitted shelving.

Family Bathroom

Modern fitted family bathroom comprising W.C. with low level flush, vanity unit with wash hand basin and storage cupboards beneath, panel enclosed bath with mixer tap and shower attachment, walk-in shower cubicle with electric power shower and shower attachment, wall mounted electric white heated towel rail, tiled walls.

Outside

Front Garden

Mainly laid to lawn with some mature plant, shrub and hedge borders, block paved pathway leading to front door, driveway providing off road parking for multiple vehicles.

Rear Garden

Raised timber decking which wraps round to the rear of the property, the rest the of the garden is mainly laid to lawn with mature plant, shrub and hedge borders, two timber garden sheds, workshop, timber chicken coop, vegetable patch and greenhouse, additional garden shed, hard standing for potential summer house, gated access down both sides of the property, rear access into garage, approx 200ft in length.

Garage

17'9" x 8'11" (5.42 x 2.73)

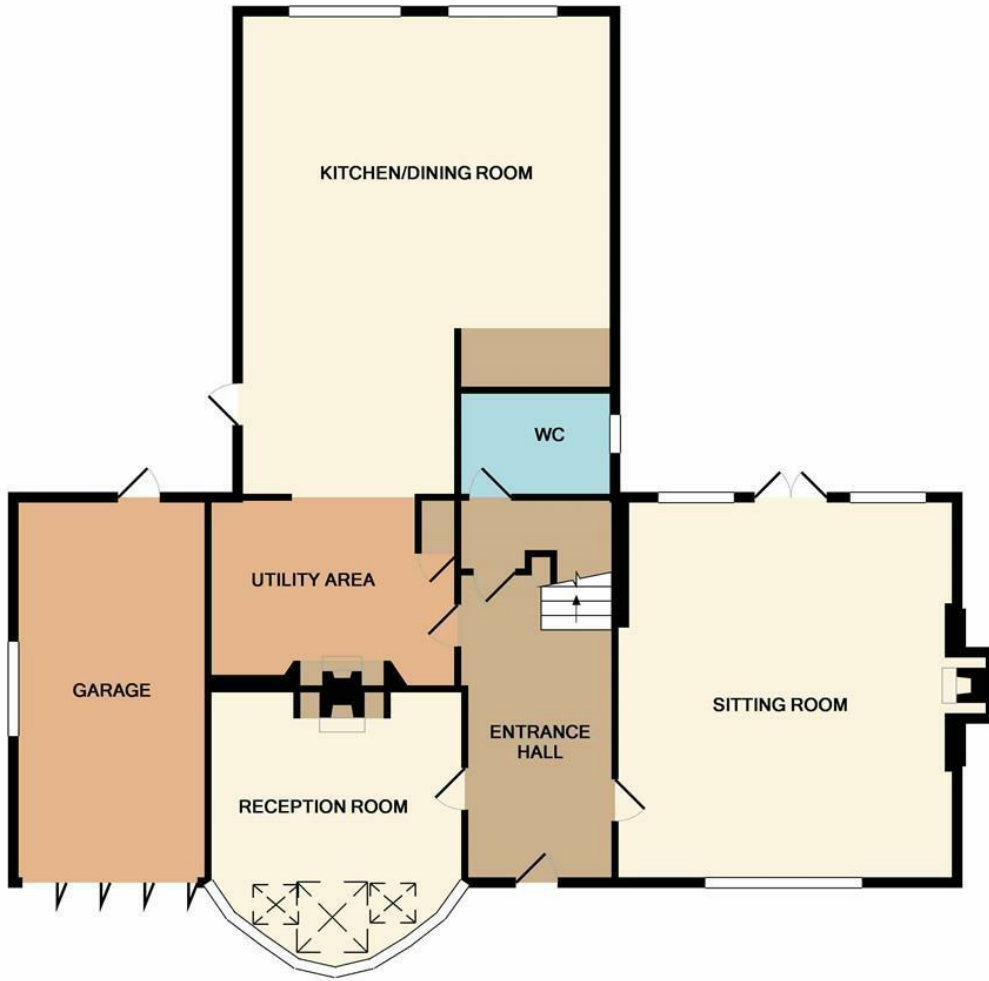
Window to side elevation, light and power, electric consumer unit and gas meter.

Agents Notes

None of the services or appliances mentioned in these sale particulars have been tested.

It should also be noted that measurements quoted are given for guidance only and are approximate and should not be relied upon for any other purpose.





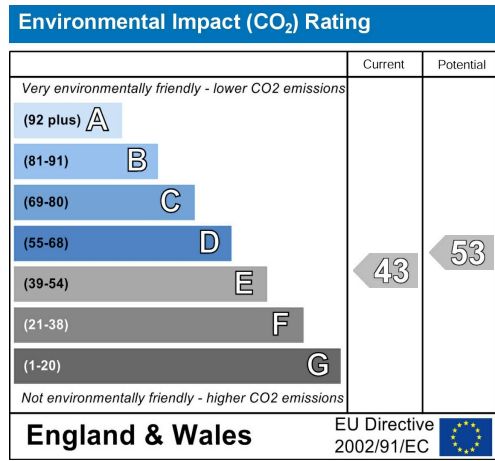
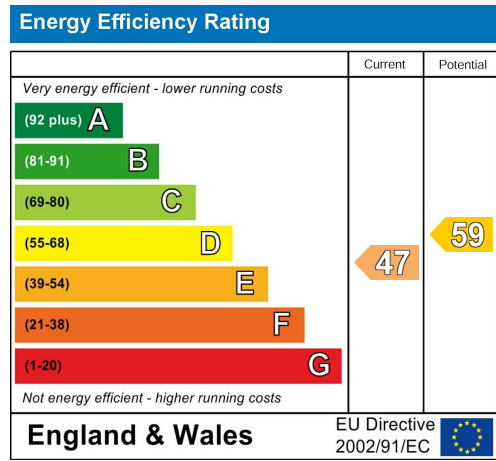
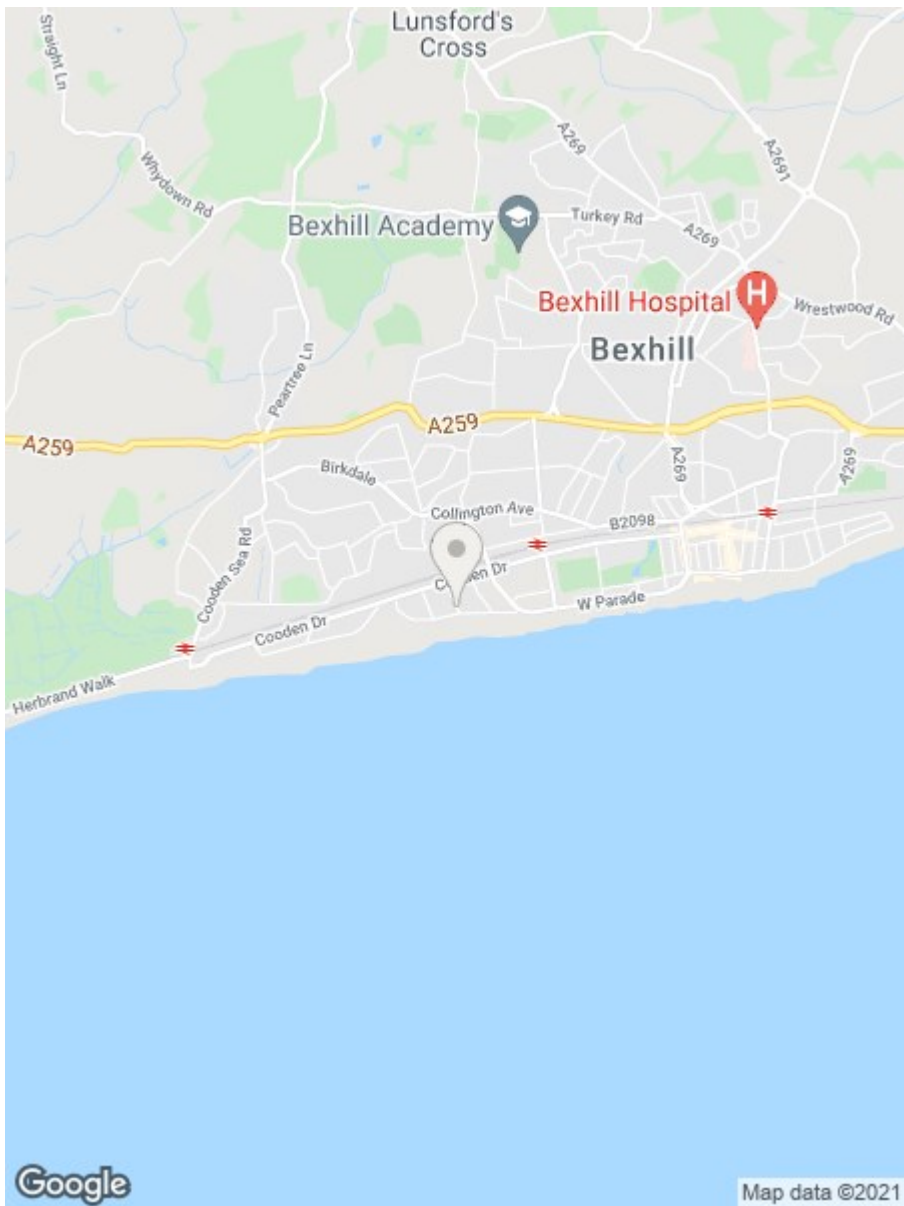
GROUND FLOOR
APPROX. FLOOR
AREA 1213 SQ.FT.
(112.7 SQ.M.)



1ST FLOOR
APPROX. FLOOR
AREA 1176 SQ.FT.
(109.2 SQ.M.)

TOTAL APPROX. FLOOR AREA 2389 SQ.FT. (221.9 SQ.M.)

Whilst every attempt has been made to ensure the accuracy of the floor plan contained here, measurements of doors, windows, rooms and any other items are approximate and no responsibility is taken for any error, omissions or mis-statement. This plan is for illustrative purposes only and should be used as such by any prospective purchase.
Made with Metropix ©2019



**RUSH
WITT &
WILSON**

**Residential Estate Agents
Lettings & Property Management**



**3 Devonshire Road
Bexhill-on-Sea
East Sussex
TN40 1AH
Tel: 01424 225588
bexhill@rushwittwilson.co.uk
www.rushwittwilson.co.uk**